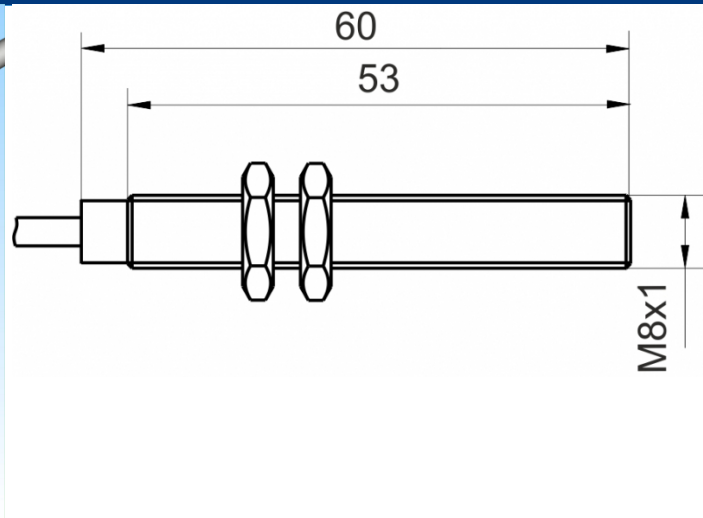
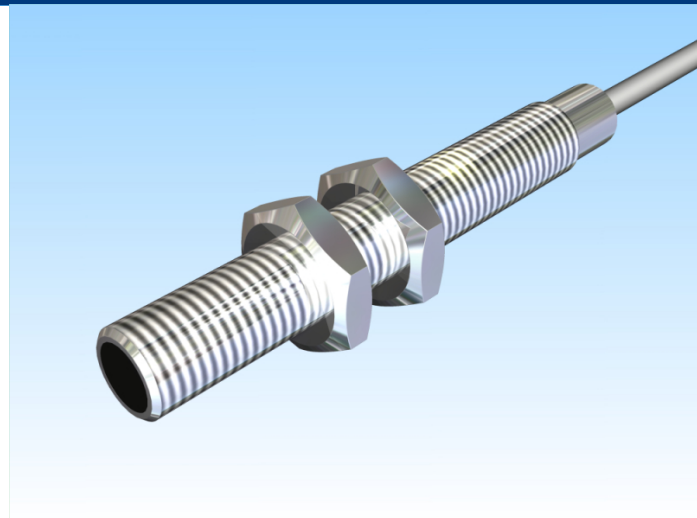


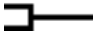
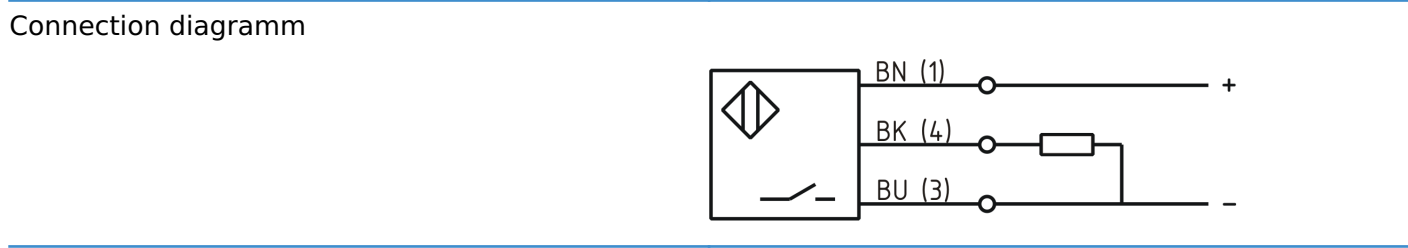


[Article Page](#)

Product Description **inductive sensor high temperature**



Name	KJ2-M8EB60-DPS-HT140-X0202
Order number	08310000959
Switching distance	2 mm
Mounting	 shielded
Switch type	 N.O.
Signal Type	DC PNP
Connection	 Cable



Dimension (in mm)	fine-pitch thread M8 x 60
-------------------	---------------------------

Technical Specification

Special features	high temperature sensor up to 140°C Connecting Cable Silicone
Operating voltage	10 - 30 V DC
Max. ripple	≤ 10 %
Voltage drop	2 V
Max. load current	80 mA
No load current	≤ 15 mA
Leakage current	≤ 20 μA
Switching frequency	600 Hz

Switching hysteresis	≤ 15 %
Operating temperature	-25 ° C to 140 ° C
Temperature drift	+/- 15 %
Time delay	0,8 ms
Short-circuit proof	yes
Reverse voltage protection	yes
Protection category	IP65
EMC-level	DIN EN 60947-5-2: 2008
Housing material	Stainless steel V2A
Material active face	VECTRA
Cable length	2 m
Utilisation category	DC 13
Cable material	Silikon SI-HF grau
Conductor diameter	1,5 mm mm mm
Nominal operating voltage	24 V DC
Cable cross	3x0.25 mm ²
MTTF acc. to SIEMENS 29500	358y

Errors and omissions excepted