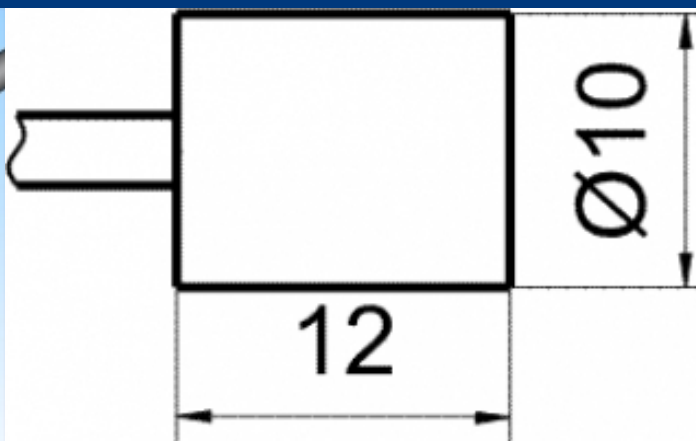
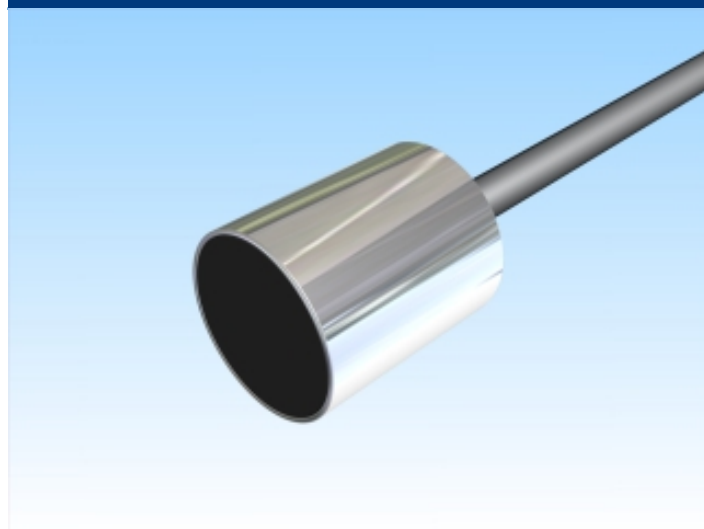

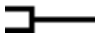


[Article Page](#)

Product Description

inductive sensor Pick-Up



Name	KJ3-G10MB12
Order number	08317061000
Matchcode	9906-1000
art_schaltabstand_einstellbar	yes
Switching distance	3 mm
Mounting	 shielded
Connection	 Cable
Dimension (in mm)	D 10 x 12

Technical Specification

Special features	PickUp sensor for using with amplifiers
Switching frequency	5000 Hz
Switching hysteresis	bei Sn = 1,5 mm < 0,05 mm
Operating temperature	-10 ° C to 70 ° C
Repeat accuracy	≤ 0,01 mm
Protection category	IP67
EMC-level	n.n.
Housing material	Brass, nickel plated
Material active face	PA 6.6
Cable length	2 m
Cable material	Koax PVC LI2YDY
Cable cross	1x 1,0
FIT / MTTF acc. to SIEMENS 29500	6,56 / 17402y

Errors and omissions exceptet