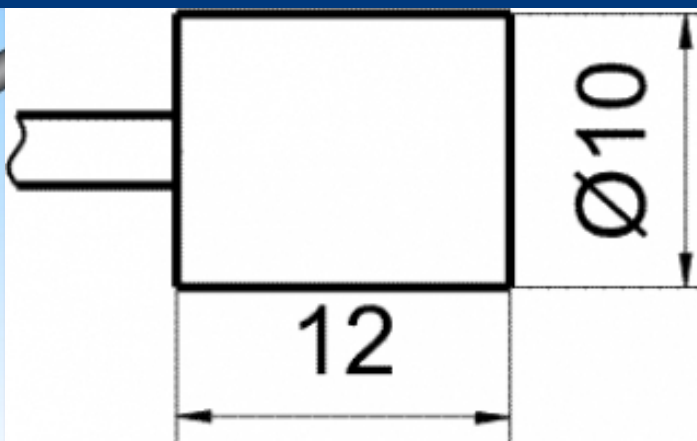
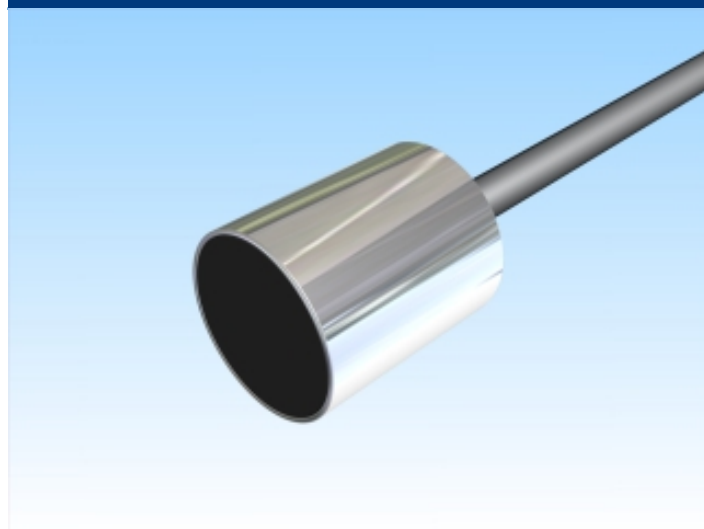

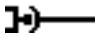


[Article Page](#)

Product Description

inductive sensor Pick-Up



Name	KJ3-G10MB12-VK
Order number	08317061100
Matchcode	9906-1100
art_schaltabstand_einstellbar	yes
Switching distance	3 mm
Mounting	 shielded
Connection	 Connector
Dimension (in mm)	D 10 x 12

Technical Specification

Special features	PickUp sensor for using with Amplifiers Termination with BNC-connector
Switching frequency	5000 Hz
Switching hysteresis	bei $S_n = 1,5 \text{ mm} < 0,05 \text{ mm}$
Operating temperature	-10 ° C to 70 ° C
Repeat accuracy	$\leq 0,01 \text{ mm}$
Protection category	IP67
Housing material	Brass, nickel plated
Material active face	PA 6.6
Cable length	2 m
Cable material	Koax PVC LI2YDY
Cable cross	1x1,0 mm ²
FIT / MTTF acc. to SIEMENS 29500	6,56 / 17402y

Errors and omissions excepted